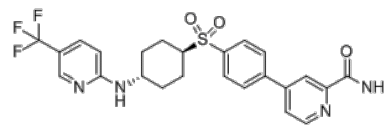


Product Name : CCR6 inhibitor 35
Cat. No. : PC-35572
CAS No. : 2437547-04-9
Molecular Formula : C₂₄H₂₃F₃N₄O₃S
Molecular Weight : 504.528
Target : Chemokine Receptor (CCR and CXCR)
Solubility : 10 mM in DMSO



Biological Activity

CCR6 inhibitor 35 is a potent and selective **CCR6** inhibitor with IC₅₀ of 6.0 nM (hCCR6). CCR6 inhibitor 35 exhibits potent activity in the migration assay as well as the Gi signal assay with IC₅₀ of <30 nM and 6 nM in human CCR6-transfected CHO cells, respectively, and displays high human CCR6 selectivity over human CCR1 and CCR7. CCR6 inhibitor 35 potently inhibits CCR6-dependent cell migration and the increase in ERK phosphorylation in human primary cells.

References

Tawaraishi T, et al. *Bioorg Med Chem Lett*. 2018 Jul 30. pii: S0960-894X(18)30637-1.

Caution: Product has not been fully validated for medical applications. Lab Use Only!

E-mail: tech@probechem.com